

BENNETT'S BOUES

WAYLAN

F guitar

8.6.1

PIANO

F

D

F

F

B^b

B^b

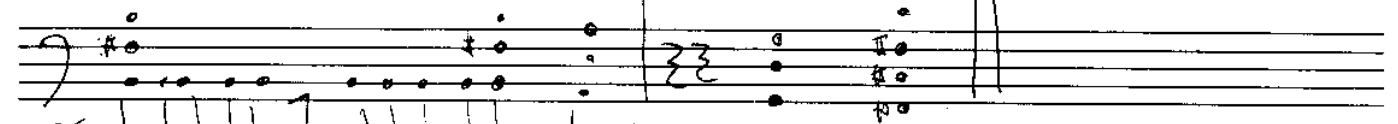
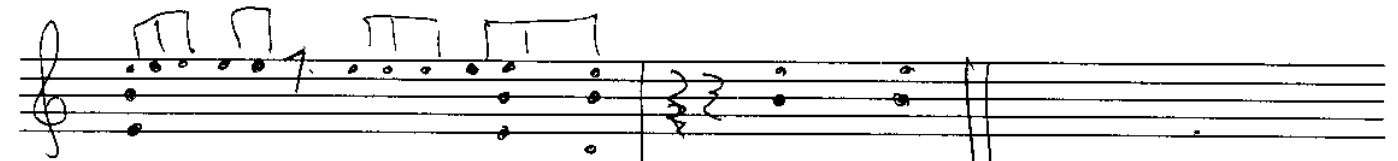
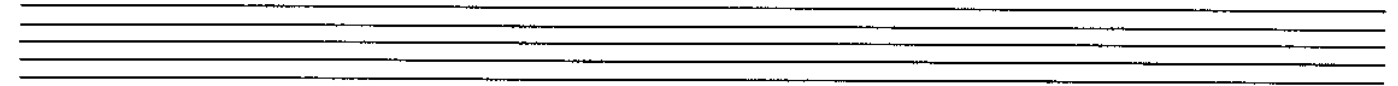
B^b

C

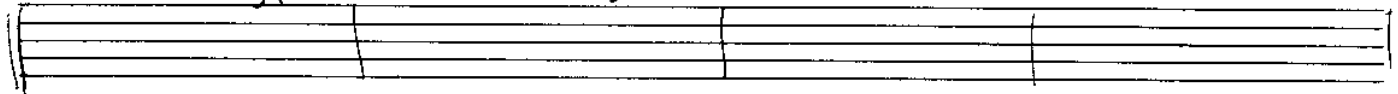
anything

Bass

FRUIT FAN HOTEL FAN



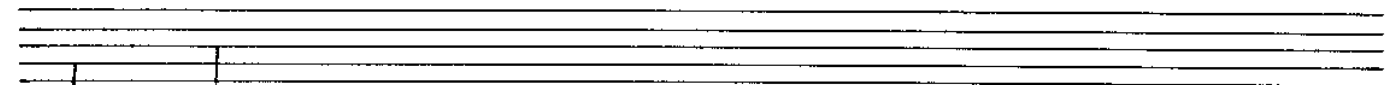
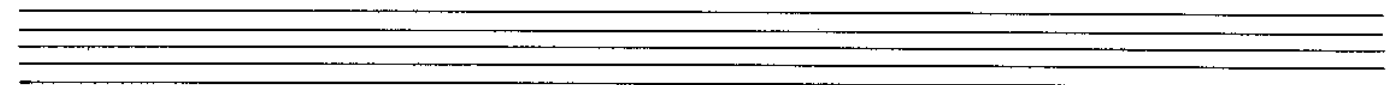
SOLOS
A7 1st time = 1 then 1/2 time E7



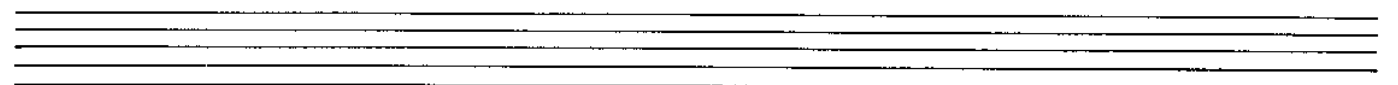
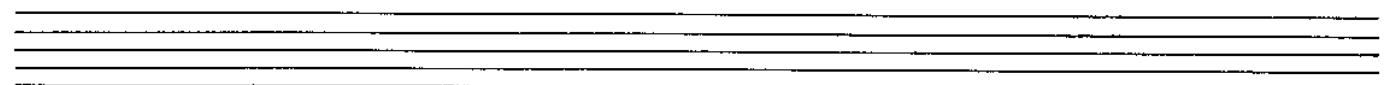
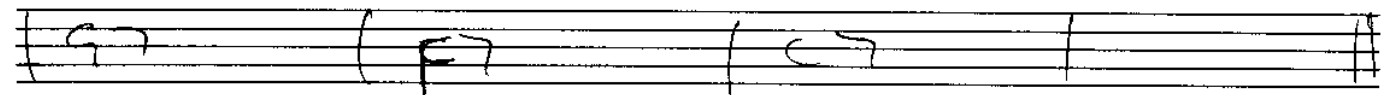
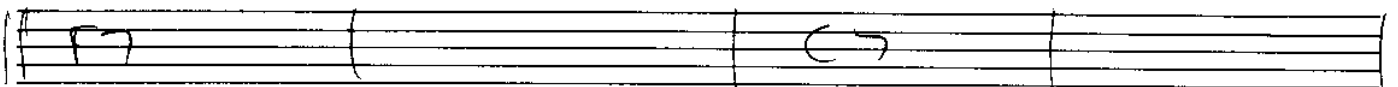
B7

A7

E7



~~PRINCE SOLO~~



7-8-0" James Muller © 2003

Musical notation with chords: Dm, Dm/C, Bb/A, Am7b6, Bb/Ab, Gm7, Aadd4, F#m, C#m7b6, C13, G/C, Aadd4, F#m, C#m7b6, C13, F/Eb, F/E, D/C, D/C.

Musical notation with chords: Am, Bm7, C#m7, D, Bm7, C#m7, D, Dm, Am.

Musical notation with a double bar line.

Handwritten scribbles and musical notation.

Handwritten scribbles and musical notation.

Musical notation with a double bar line.

GREEN EYES

Muller

© 2001

intro.
C#m7

D#4

Bb#4

(A/Bb)

Dm7

C#m7

C#m7

A7 (whole tone)

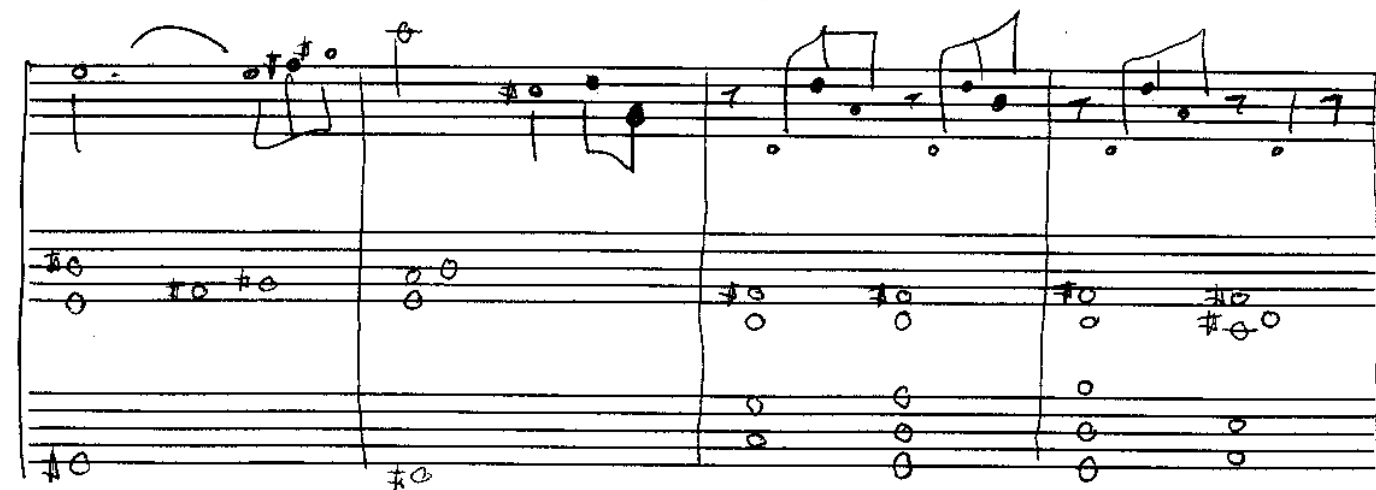
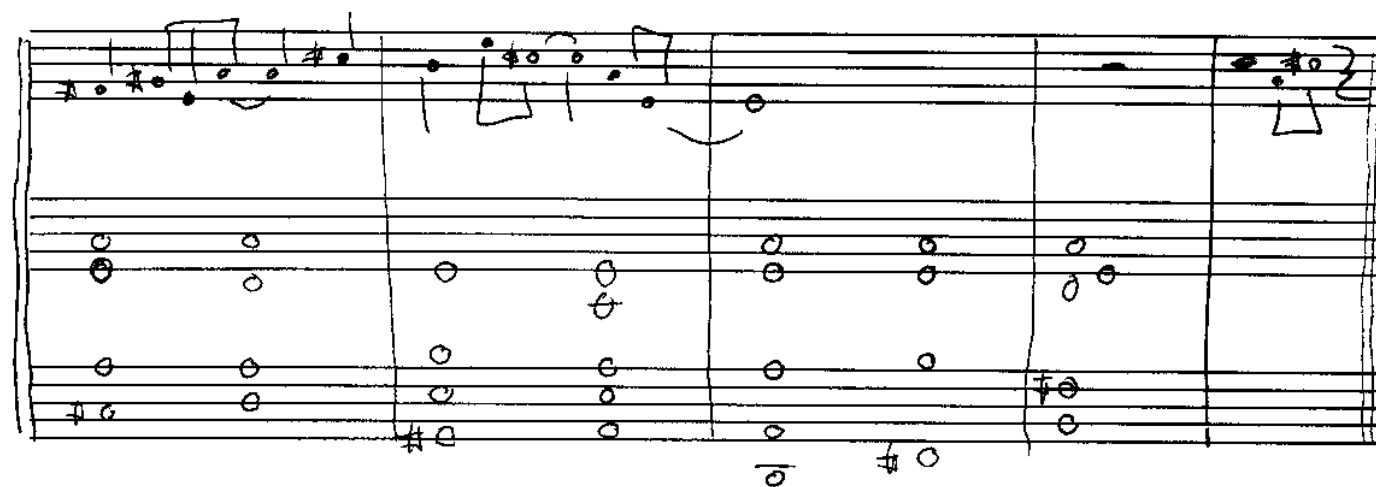
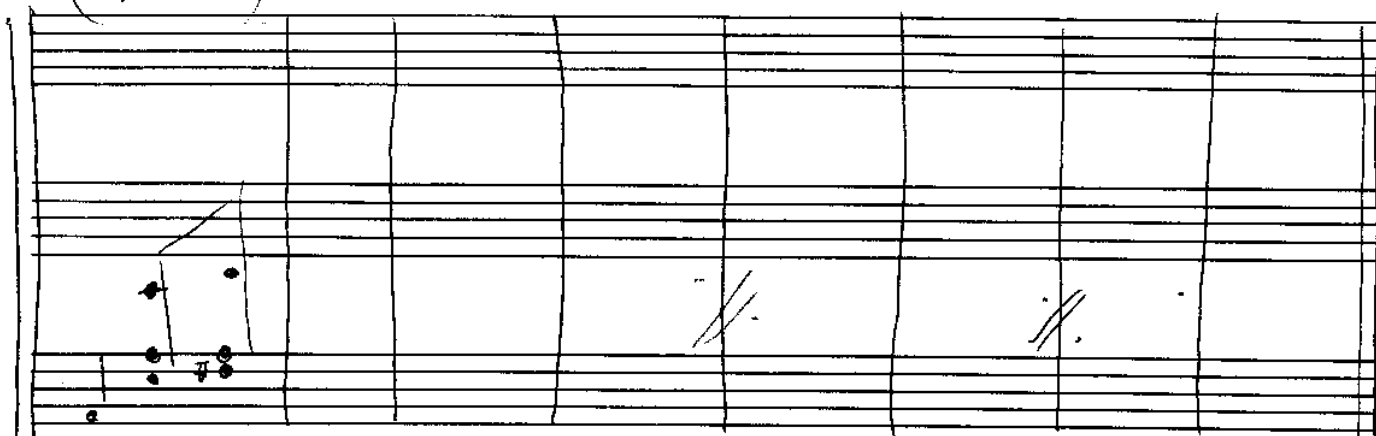
A7

Dm7

(A-)

HUMDINGER

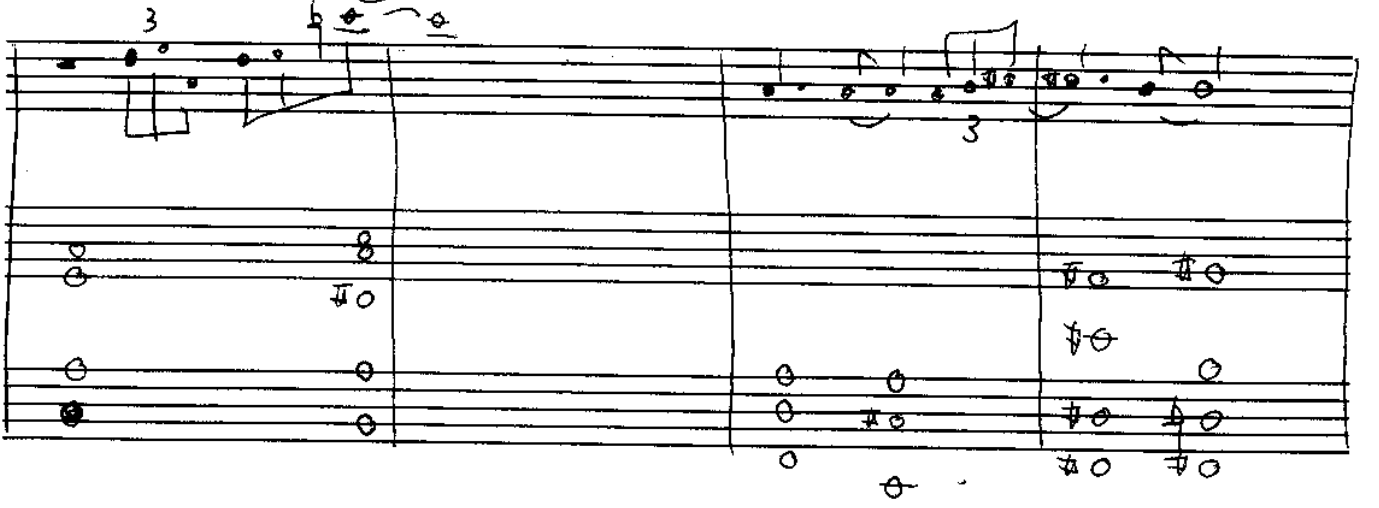
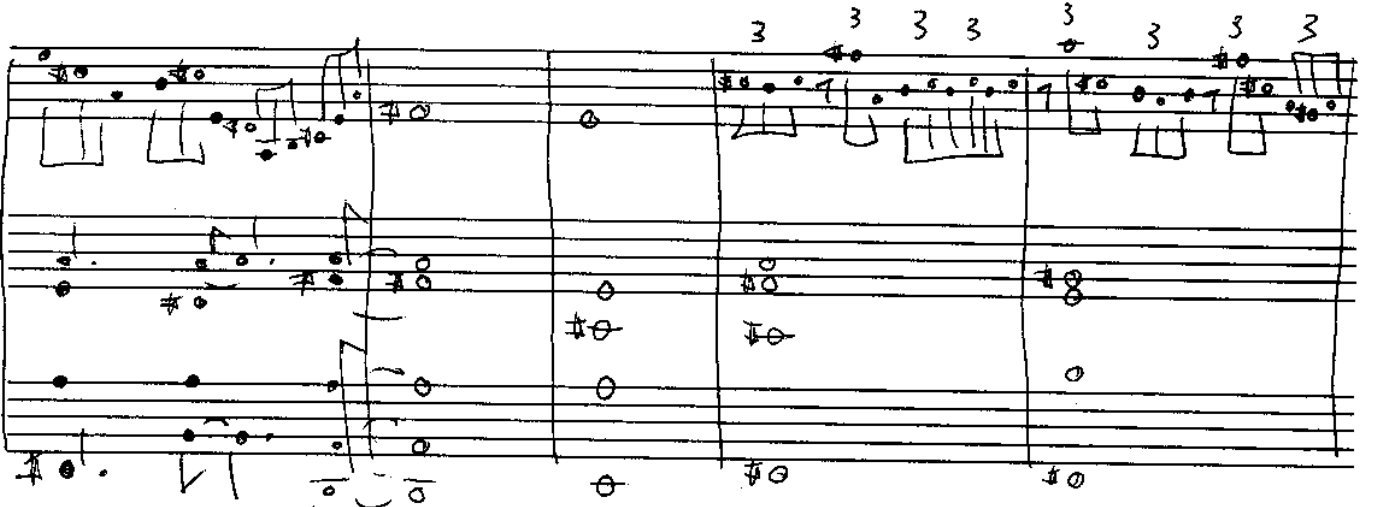
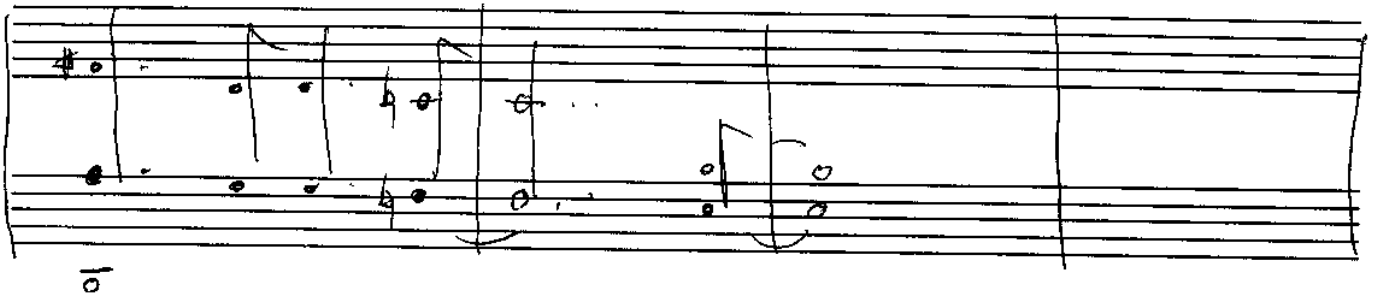
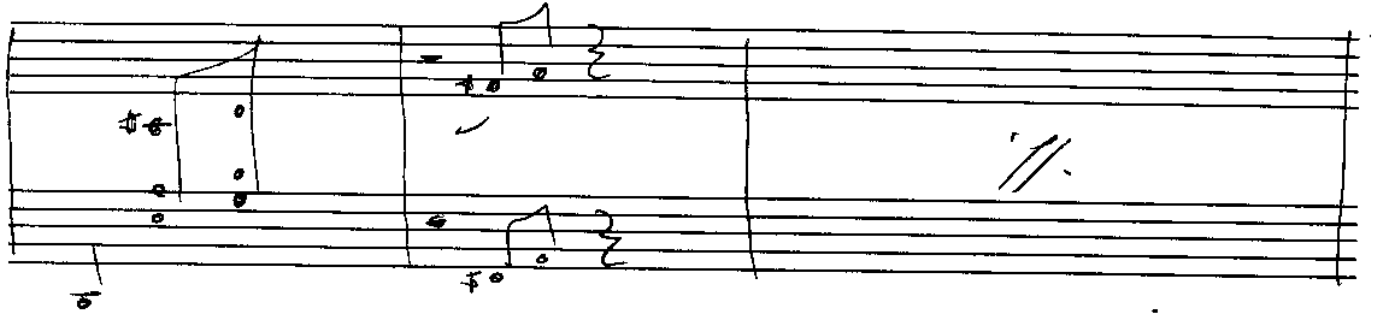
①



Passantino

NO. 2 MUSIPACK 10 STAVE/PO 10264

2



3

Handwritten musical notation on a five-line staff. The notation includes various notes, rests, and accidentals (sharps, flats, naturals). There are also some handwritten annotations like "4/4" and "10" near the notes. The staff is divided into measures by vertical bar lines.

Handwritten musical notation on a five-line staff. The notation includes various notes, rests, and accidentals. There are also some handwritten annotations like "2" and "11." near the notes. The staff is divided into measures by vertical bar lines.

Empty musical staff with five lines.

Empty musical staff with five lines.

Empty musical staff with five lines.

Empty musical staff with five lines.

Empty musical staff with five lines.

HUMDINGER

A-

A/C# D E/G# A D F# B- B-

A7

E/G# F# D/C G G A

D A/D G/D

D pedal

F# (8va) B7 D A/E F#

E/F C69 B7 6 9

F69 A/E B/F# B-/F# B+ A69 D

D(sus)

I AM NOT A WALRUS

3 bars 3 bars 3 bars 3 bars

2 bars 2 bars 2 bars 2 bars

JUNE 25

The image shows ten musical staves with handwritten notation. The notation includes various note values (half notes, quarter notes, eighth notes, sixteenth notes), rests, and accidentals (sharps, flats, naturals). The notation is written in a simple, hand-drawn style. The first staff has two notes. The second staff has a sequence of notes with some accidentals. The third staff has two notes. The fourth staff has a sequence of notes with some accidentals. The fifth staff has two notes. The sixth staff has two notes. The seventh staff has a sequence of notes with some accidentals. The eighth, ninth, and tenth staves are empty.

